

\$399,500 - 280 Stonemere Place, Chestermere

MLS® #A2211082

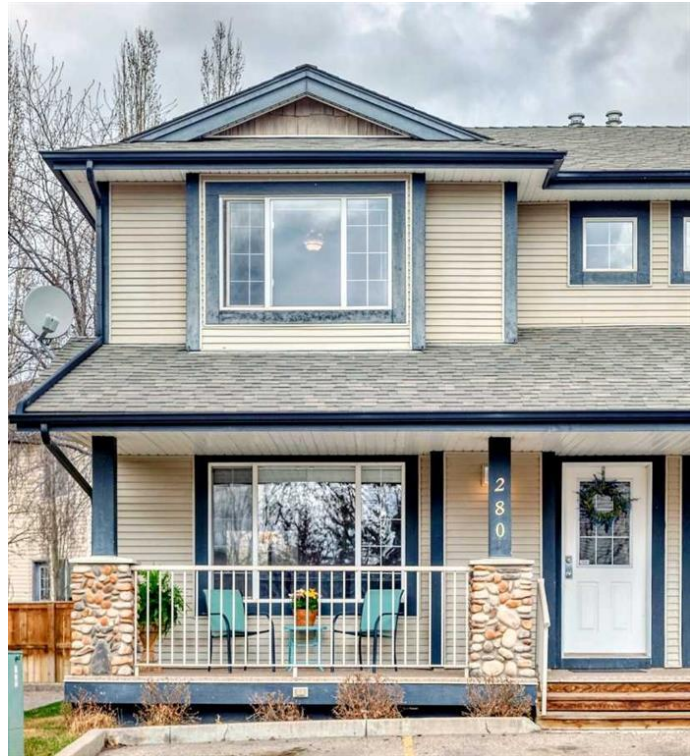
\$399,500

4 Bedroom, 3.00 Bathroom, 1,224 sqft

Residential on 0.00 Acres

NONE, Chestermere, Alberta

Welcome to this private, immaculate end-unit townhouse in the sought after Stonemere neighborhood! This townhouse boasts 1836 sq ft of living space sprawled out over a BRIGHT open floor plan! The BEST VALUE for a 4 bedroom in Chestermere!!! This beautiful townhouse has 4 spacious bedrooms, 3 bathrooms—one featuring a tub for relaxing soaks, another with a standup shower, and a convenient half bath on the main level. The fully finished basement was just completed and offers an additional versatile living space for multi family living, an additional family room, playroom or home office. Outdoors, a large private, covered front porch enhances the end-unit feel while the backyard delights with beautiful flowering trees in the spring and summer, a partially fenced yard, a private patio, and a small garden perfect for unwinding or entertaining. With 2 dedicated parking stalls plus plenty of guest parking, convenience is key! Its enviable location places you steps from shopping, restaurants, grocery stores, and all the local amenities. Enjoy a 5 minute walk to the heart of Chestermere's City Beach, John Peak Park, Skate Park, Library and Community Resources, as well as schools—public K-6 and a Catholic school serving Grades 8- 12. This home backs onto walking paths, a dog park and offers both modern comforts with a community-focused lifestyle, making it a perfect choice for your next chapter!



Built in 2002

Essential Information

| | |
|----------------|---------------|
| MLS® # | A2211082 |
| Price | \$399,500 |
| Bedrooms | 4 |
| Bathrooms | 3.00 |
| Full Baths | 2 |
| Half Baths | 1 |
| Square Footage | 1,224 |
| Acres | 0.00 |
| Year Built | 2002 |
| Type | Residential |
| Sub-Type | Row/Townhouse |
| Style | 2 Storey |
| Status | Active |

Community Information

| | |
|-------------|---------------------|
| Address | 280 Stonemere Place |
| Subdivision | NONE |
| City | Chestermere |
| County | Chestermere |
| Province | Alberta |
| Postal Code | T1X 1N2 |

Amenities

| | |
|----------------|--|
| Amenities | Beach Access, Parking, Picnic Area, Snow Removal, Trash, Visitor Parking |
| Parking Spaces | 2 |
| Parking | Additional Parking, Guest, Paved, Plug-In, Stall, Parking Lot |
| # of Garages | 2 |

Interior

| | |
|-------------------|---|
| Interior Features | Chandelier, Closet Organizers, High Ceilings, No Animal Home, No Smoking Home, Open Floorplan, Storage, Sump Pump(s), Vinyl Windows |
| Appliances | Dishwasher, Electric Stove, Refrigerator, Washer/Dryer, Window Coverings |
| Heating | Forced Air, Natural Gas |
| Cooling | None |

Has Basement Yes
Basement Finished, Full

Exterior

Exterior Features Courtyard, Garden, Private Y
Lot Description Back Yard, Corner Lot, Gar
Landscape, Paved, Private, S
Roof Asphalt Shingle
Construction Vinyl Siding, Wood Frame
Foundation Poured Concrete



Additional Information

Date Listed April 17th, 2025
Days on Market 34
Zoning DC

Listing Details

Listing Office RE/MAX Key

Data is supplied by Pillar 9â„¢ MLS® System. Pillar 9â„¢ is the owner of the copyright in its MLS® System. Data is deemed reliable but is not guaranteed accurate by Pillar 9â„¢. The trademarks MLS®, Multiple Listing Service® and the associated logos are owned by The Canadian Real Estate Association (CREA) and identify the quality of services provided by real estate professionals who are members of CREA. Used under license.