

# \$334,786 - 21, 111 Tarawood Lane Ne, Calgary

MLS® #A2218159

**\$334,786**

2 Bedroom, 2.00 Bathroom, 1,050 sqft

Residential on 0.04 Acres

Taradale, Calgary, Alberta

Bright end unit 2 bed 1.5 bath, with minutes walk to the shopping complex and Saddle Towne Circle C-train station. Nice big kitchen with dining area, spacious living room and 2 pc washroom on the main floor. Upper floor has 2 huge bedrooms with full washroom. Full unspoiled basement waiting for your creative ideas. Parking just in front of the house. Don't Miss this one Call Your Favourite Realtor Now !!

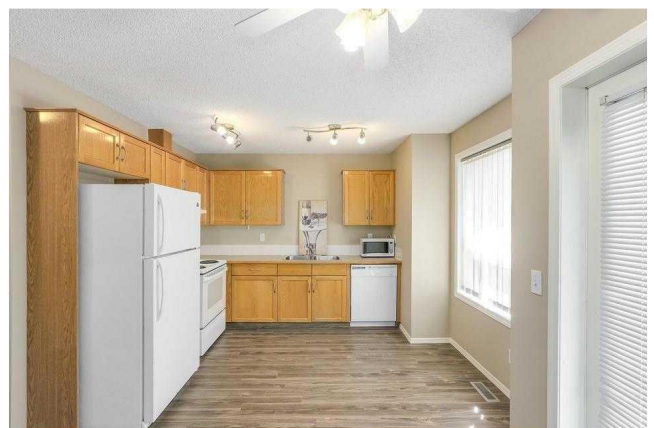
Built in 2003

## Essential Information

MLS® #	A2218159
Price	\$334,786
Bedrooms	2
Bathrooms	2.00
Full Baths	1
Half Baths	1
Square Footage	1,050
Acres	0.04
Year Built	2003
Type	Residential
Sub-Type	Row/Townhouse
Style	2 Storey
Status	Active

## Community Information

Address 21, 111 Tarawood Lane Ne



Subdivision	Taradale
City	Calgary
County	Calgary
Province	Alberta
Postal Code	T3J 5B9

### Amenities

Amenities	Playground
Parking Spaces	1
Parking	Stall

### Interior

Interior Features	Laminate Counters
Appliances	Dishwasher, Dryer, Range Hood, Refrigerator, Washer, Electric Stove
Heating	Forced Air
Cooling	None
Has Basement	Yes
Basement	Full, Unfinished

### Exterior

Exterior Features	Other
Lot Description	Back Yard
Roof	Asphalt Shingle
Construction	Wood Frame
Foundation	Poured Concrete

### Additional Information

Date Listed	May 6th, 2025
Days on Market	45
Zoning	M-1

### Listing Details

Listing Office	Diamond Realty & Associates LTD.
----------------	----------------------------------

Data is supplied by Pillar 9â„¢ MLS® System. Pillar 9â„¢ is the owner of the copyright in its MLS® System. Data is deemed reliable but is not guaranteed accurate by Pillar 9â„¢. The trademarks MLS®, Multiple Listing Service® and the associated logos are owned by The Canadian Real Estate Association (CREA) and identify the quality of services provided by real estate professionals who are members of CREA. Used under license.