

# \$799,900 - 66 Copperpond Heath Se, Calgary

MLS® #A2226155

**\$799,900**

5 Bedroom, 4.00 Bathroom, 2,404 sqft  
Residential on 0.09 Acres

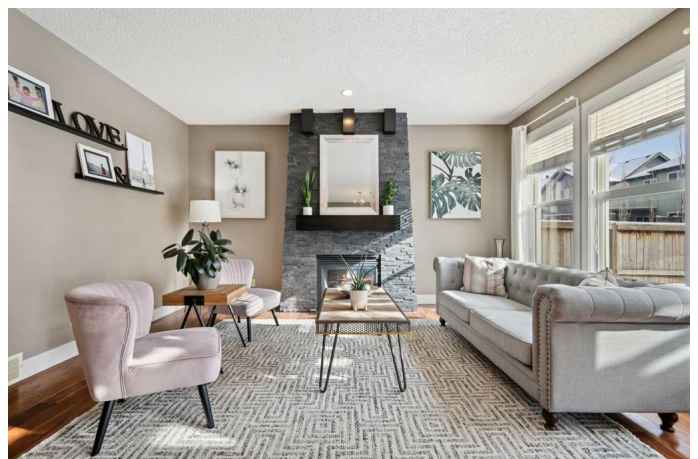
Copperfield, Calgary, Alberta

**\*\* Custom Former Show Home \*\* - Family Approved - Five bedrooms + two dens \*\***  
Extensive upgrades and superior quality, with 3,500 square feet of air-conditioned, luxurious living space. **\*\* You will be impressed with the privacy of an oversized traditional homesite with a private south-facing backyard with a bespoke 13' x 12' covered deck. This seasonal, airy design provides relief from the sunniest to the snowiest days while providing an uninterrupted view of the surrounding gardens. Enjoy this convenient Copperfield Location - steps away from the ponds, Ice rink, parks, pathways, schools, shopping, soccer fields, skate park, healthcare, transit, South Pointe Hospital, and the major south expressways. Living a community lifestyle makes Copperfield an outstanding, safe, and secure community. Rich curb appeal with architectural features - dramatic roof lines, 24' x 21' attached garage with wood-style detailed door & full-sized concrete driveway, covered entry, and brick-faced front complete this spectacular elevation. There are extensive upgrades throughout, and the details are superb. This is a must-see home! Chefâ€™s kitchen includes granite countertops, custom light wood shaker style cabinets/doors, extension trims, high-end KitchenAid stainless steel fridge/dishwasher/microwave/wall oven, gas cooktop range with five burners, recessed lighting, oversized central island, peninsula island with a flush eating bar & black granite under mount sink, extra cabinet storage & a**



## 66 COPPERPOND HEATH SE

MAIN LEVEL (AG) - 1094.59 Sq Ft / 101.68 m<sup>2</sup>  
UPPER LEVEL (AG) - 1509.73 Sq Ft / 141.67 m<sup>2</sup>  
TOTAL ABOVE GRADE RMS SIZE - 2404.29 Sq Ft / 223.35 m<sup>2</sup>  
BASEMENT DEVELOPED AREA (BG) - 973.80 Sq Ft / 90.47 m<sup>2</sup>  
BASEMENT UNDEVELOPED AREA (BG) - 120.76 Sq Ft / 11.22 m<sup>2</sup>  
TOTAL AG+BG AREA - 3488.05 Sq Ft / 323.04 m<sup>2</sup>



large breakfast nook. The main floor layout includes a den with French doors, a family room with a stone-faced gas electric fireplace, a family-sized open foyer with a side window, & two-story-high views, and rich, wide plank real hardwood floors featured from the front entrance and throughout the main floor. The large mud room offers more storage, a laundry, and easy access to the garage. An open staircase with railing and plush carpet leads to the upper four bedrooms, a bonus room, and two bathrooms. The primary bedroom suite features a separate walk-in closet, his and hers vanity sinks, an oversized shower with a glass door, and a gorgeous soaker tub, completing this stunning, spa-like en-suite. BONUS: The basement is fully finished and features a large family room, bedroom, computer area, flex room, full bathroom, and utility room. Plus, non-smoking, 9' main floor ceilings, Fridge + DW are 2 yrs old, Washer is new, generously sized bedrooms with large windows, in-floor piping roughed in, A/C, plumbing/lighting, and electrical fixtures upgraded! The Fall 2025 possession date is available. You must put this home on your 'Must See List! Call your friendly REALTOR(R) to book a viewing!

Built in 2011

### **Essential Information**

MLS® #	A2226155
Price	\$799,900
Bedrooms	5
Bathrooms	4.00
Full Baths	3
Half Baths	1
Square Footage	2,404
Acres	0.09
Year Built	2011

Type	Residential
Sub-Type	Detached
Style	2 Storey
Status	Active

### Community Information

Address	66 Copperpond Heath Se
Subdivision	Copperfield
City	Calgary
County	Calgary
Province	Alberta
Postal Code	T3M 2T1

### Amenities

Amenities	Picnic Area, Recreation Facilities, Recreation Room, Beach Access, Clubhouse, Community Gardens, Playground, Party Room, Racquet Courts
Parking Spaces	4
Parking	Double Garage Attached, Garage Door Opener, Insulated, Oversized, Concrete Driveway, Front Drive, Side By Side
# of Garages	2

### Interior

Interior Features	Breakfast Bar, Built-in Features, Double Vanity, Granite Counters, High Ceilings, Kitchen Island, Open Floorplan, Pantry, Recessed Lighting, Soaking Tub, Storage, Vinyl Windows, Walk-In Closet(s), Closet Organizers, Smart Home, Wired for Sound
Appliances	Built-In Oven, Central Air Conditioner, Dishwasher, Garage Control(s), Gas Cooktop, Microwave, Range Hood, Refrigerator, Window Coverings
Heating	Central, Forced Air, Natural Gas
Cooling	Central Air
Fireplace	Yes
# of Fireplaces	1
Fireplaces	Family Room, Gas, Mantle, Stone
Has Basement	Yes
Basement	Finished, Full

### Exterior

Exterior Features	Lighting, Private Yard, Covered Courtyard, Rain Gutters
Lot Description	Front Yard, Fruit Trees/Shrub(s), Landscaped, Rectangular Lot, Street

	Lighting, Views, Close to Clubhouse, Level
Roof	Asphalt Shingle
Construction	Brick, Vinyl Siding, Wood Frame
Foundation	Poured Concrete

### **Additional Information**

Date Listed	May 30th, 2025
Days on Market	30
Zoning	R-G
HOA Fees Freq.	ANN

### **Listing Details**

Listing Office	Jayman Realty Inc.
----------------	--------------------

Data is supplied by Pillar 9â„¢ MLS® System. Pillar 9â„¢ is the owner of the copyright in its MLS® System. Data is deemed reliable but is not guaranteed accurate by Pillar 9â„¢. The trademarks MLS®, Multiple Listing Service® and the associated logos are owned by The Canadian Real Estate Association (CREA) and identify the quality of services provided by real estate professionals who are members of CREA. Used under license.