

# \$499,000 - 55, 300 Marina Drive, Chestermere

---

MLS® #A2229633

**\$499,000**

4 Bedroom, 4.00 Bathroom, 2,133 sqft

Residential on 0.00 Acres

Westmere, Chestermere, Alberta

\*\*\*Welcome to the largest and most impressive unit in the community! Professionally measured at 2,130 sq ft, this townhouse offers approximately 400 sqft more living space than any other unit in the complex. Enjoy the added convenience of an attached double garage—an exceptional find in this sought-after neighborhood.\*\*\*

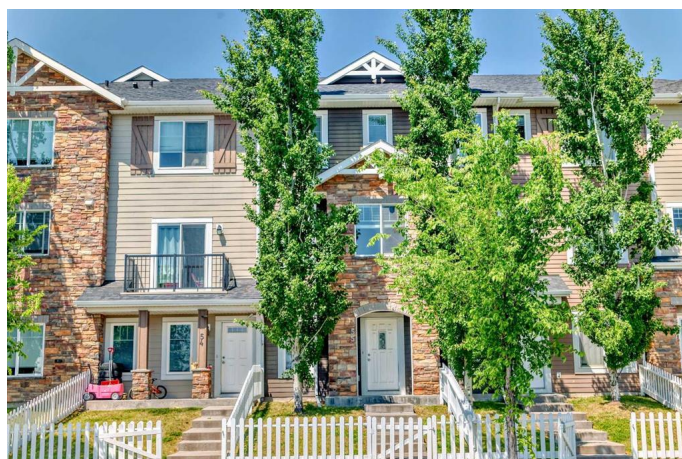
Built in 2014

## Essential Information

MLS® #	A2229633
Price	\$499,000
Bedrooms	4
Bathrooms	4.00
Full Baths	3
Half Baths	1
Square Footage	2,133
Acres	0.00
Year Built	2014
Type	Residential
Sub-Type	Row/Townhouse
Style	3 Storey
Status	Active

## Community Information

Address	55, 300 Marina Drive
Subdivision	Westmere
City	Chestermere



County	Chestermere
Province	Alberta
Postal Code	T1X 0P6

### Amenities

Amenities	Parking, Snow Removal, Trash, Visitor Parking
Parking Spaces	4
Parking	Double Garage Attached
# of Garages	2

### Interior

Interior Features	High Ceilings, Kitchen Island, No Animal Home, No Smoking Home, Pantry, Quartz Counters, Walk-In Closet(s)
Appliances	Dishwasher, Electric Stove, Garage Control(s), Microwave, Refrigerator, Washer/Dryer Stacked, Window Coverings
Heating	Forced Air, Natural Gas
Cooling	None
Basement	None

### Exterior

Exterior Features	Balcony
Lot Description	Back Lane, Few Trees, Low Maintenance Landscape
Roof	Asphalt Shingle
Construction	Brick, Vinyl Siding, Wood Frame
Foundation	Poured Concrete

### Additional Information

Date Listed	June 10th, 2025
Days on Market	72
Zoning	RM3
HOA Fees	80
HOA Fees Freq.	ANN

### Listing Details

Listing Office	Century 21 Bravo Realty
----------------	-------------------------

Data is supplied by Pillar 9â„¢ MLSÂ® System. Pillar 9â„¢ is the owner of the copyright in its MLSÂ® System. Data is deemed reliable but is not guaranteed accurate by Pillar 9â„¢. The trademarks MLSÂ®, Multiple Listing ServiceÂ® and the associated logos are owned by The Canadian Real Estate Association (CREA) and identify the quality of services provided by real estate professionals who are members of CREA. Used under license.