

\$559,900 - 155 West Lakeview Passage, Chestermere

MLS® #A2250159

\$559,900

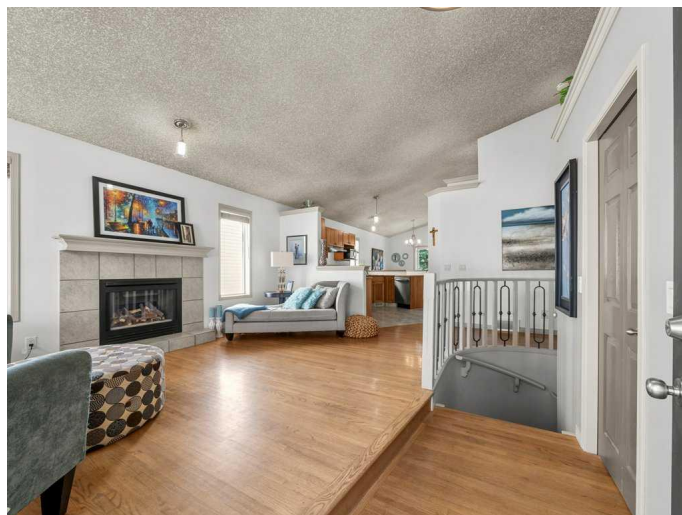
3 Bedroom, 3.00 Bathroom, 1,213 sqft

Residential on 0.12 Acres

Lakeview Landing, Chestermere, Alberta

Former showhome built by Master Builder Douglas Homes Ltd, this well-appointed bungalow offers versatile living in a mature neighbourhood near Chestermere Golf Course, playgrounds, parks and all amenities. The open floor plan features vaulted ceilings throughout the entry, living room, kitchen, dining area and master bedroom, complemented by a curved spindle staircase and genuine hardwood floors in the entry and living room. The front living room showcases a gas fireplace with mantle, while the centre kitchen boasts a walk-in pantry, ample counter space, stainless steel appliances including a dishwasher and stove less than a year old, and flows seamlessly to the spacious dining area with patio doors leading to an impressive two-level deck measuring 575 square feet. The master bedroom includes vaulted ceilings, walk-in closet, and luxurious ensuite with soaker tub and separate shower area with pocket door privacy, while a second bedroom, four-piece bathroom, and laundry area with washer less than a year old complete the main floor. The developed lower level features a large family room, third bedroom, three-piece bathroom, and generous storage area. Additional highlights include a fully fenced and landscaped yard, double attached garage with insulated and finished walls, and recently replaced furnace (February 2025).

Chestermere is a vibrant lakeside community just east of Calgary, built around a 4.8 km long recreational lake where residents enjoy



boating, swimming, and year-round water activities, with the town also offering golf courses, parks, pathways, and modern amenities, blending small-town charm with easy access to the city.

Built in 2000

Essential Information

MLS® #	A2250159
Price	\$559,900
Bedrooms	3
Bathrooms	3.00
Full Baths	3
Square Footage	1,213
Acres	0.12
Year Built	2000
Type	Residential
Sub-Type	Detached
Style	Bungalow
Status	Active

Community Information

Address	155 West Lakeview Passage
Subdivision	Lakeview Landing
City	Chestermere
County	Chestermere
Province	Alberta
Postal Code	T1X 1G8

Amenities

Parking Spaces	4
Parking	Double Garage Attached
# of Garages	2

Interior

Interior Features	Vaulted Ceiling(s)
Appliances	Dishwasher, Dryer, Refrigerator, Stove(s), Washer, Window Coverings
Heating	Forced Air

Cooling	None
Fireplace	Yes
# of Fireplaces	1
Fireplaces	Gas
Has Basement	Yes
Basement	Finished, Full

Exterior

Exterior Features	Private Yard
Lot Description	Back Yard, Rectangular Lot
Roof	Asphalt Shingle
Construction	Stone, Vinyl Siding
Foundation	Poured Concrete

Additional Information

Date Listed	August 20th, 2025
Days on Market	1
Zoning	R-1

Listing Details

Listing Office	RE/MAX iRealty Innovations
----------------	----------------------------

Data is supplied by Pillar 9â„¢ MLSÂ® System. Pillar 9â„¢ is the owner of the copyright in its MLSÂ® System. Data is deemed reliable but is not guaranteed accurate by Pillar 9â„¢. The trademarks MLSÂ®, Multiple Listing ServiceÂ® and the associated logos are owned by The Canadian Real Estate Association (CREA) and identify the quality of services provided by real estate professionals who are members of CREA. Used under license.